

kinect2.0

catalogue

kinect2.0	1
one. matters need attention:	1
two. Computer recommended configuration and system optimization	2
three. driver download	2
3.1 kinect2.0 driver download	2
3.2 kinect2.0 driver installation	2
four. Body feeling installation	4
4.1 kinect2.0 dimension drawing	4
4.2 kinect2.0 connection diagram.....	4
4.3 Common fixation method	5
five. Sensory connectivity screening method	7
5.1 Device Manager Views kinect2.0	7
5.2 The microphone matrix drive must be in an on state	8
5.3 Use the somatosensory built-in SDK driver to check whether the camera is connected	8
six. How to start the game on	10
6.1 Single game-The startup folder that comes with the system	10
6.2 Multiple Games-List Players' Methods	11
Seven, the list player central control code	13

one. matters need attention:

(1) In order to ensure the interaction effect, the best distance from Kinect 2.0 is recommended: about 1.5 m-3.5 m.

(2) The Kinect 2.0 needs to be placed at a height of 0.3 meters-2 meters from the ground.

(3) Experience body-sensing interaction Do not wear black reflective material clothes, because for black reflective objects, the texture information is not obvious (there is no gradient change between adjacent pixels), and the color information is not obvious (the pixel value is basically 0).

(4) Before running, please determine that the computer configuration, it must be a win10 64-bit professional version (cannot use the home version), and kinect2.0 must be inserted into the motherboard rear usb3.0 interface.

(5) Microsoft motion sensing second generation can not exceed 5 meters of computer host, more than 5 meters using optical fiber usb3.0 line, customer self-provided (1800 cases), Kinect body sensor USB3.0 optical fiber (10 meters-50 meters); more than 50 meters of distance, using usb3.0 optical fiber transceiver.

(kinect2.0 camera, Color = 1920 x 1080 x 4 x 30 about 237M, Depth = 512 x 424 x 2 x 30 about 12M, a total of about 250M / s. The amount of data transmitted is particularly large.) Note:

Ordinary green extension lines of usb2.0 and Os b 3.0 cannot be used and must be optical fiber optic.

(6) Body sensing camera 1 m recognition range color mode: long 180 1 high high 105,16:9; depth chart (bone recognition) 140 1 high 110,4:3 ratio, we currently use 1920 * 1080 projector bone without offset.

two. Computer recommended configuration and system optimization

[Processor]: I5-10400F or I7

[Main board]: Microstar

[Memory]: 8G

[Hard disk]: Solid-state 240G

[Chassis]: First horse craftsman 5

[Graphics card]: independent graphics card GTX1050TI 4G and above

[Operating system]: windows 10 Professional version 64-bit

After installing the system, close the WIN10 system Disable automatic update + close the windows defender: (must be set)

Right-click the Start menu-Run-enter the gpedit.msc,

(1) Computer configuration-management template- -Windows component- -Windows update- -double-click the configuration automatic update, select disabled;

(2) Find the user configuration-management template-system Windows automatic update-select enabled;

(3) Computer Configuration- -Management template- -windows component- -windows Defender (1709 or above) - -Close the windows defender (virus protection program) - -instead of enabled and then confirmed.

(4) 1909 and above also needs in the lower right corner of the taskbar-windows Security Center-Home

-Virus and threat protection-shutdown

-Account Protection-Close

-Firewall and network protection-Domain, private, public-off

(5) Uninstall the antivirus software before starting the program.360, Kingsoft drug and other antivirus software affects the normal operation of the program.

three. driver download

3.1 kinect2.0 driver download

Verify that the driver for the corresponding Kinect is installed and connect the Kinect sensor to the USB 3.0 interface of the computer.

Attached 1: Kinect2 driver official download page:

<https://www.microsoft.com/en-us/download/details.aspx?id=44559>

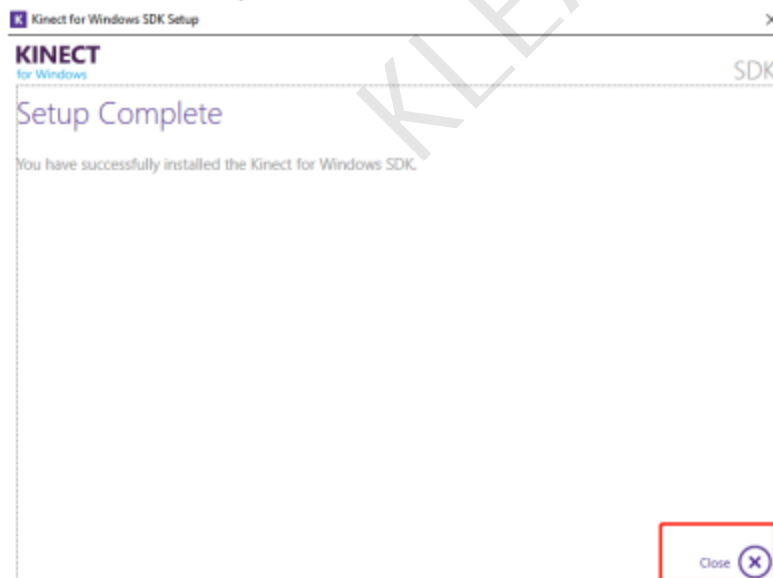
3.2 kinect2.0 driver installation

Open and check, click Install, always click on the next step.



You have successfully installed the Kinect for Windows SDK.

You have successfully installed the Kinect for Windows SDK.

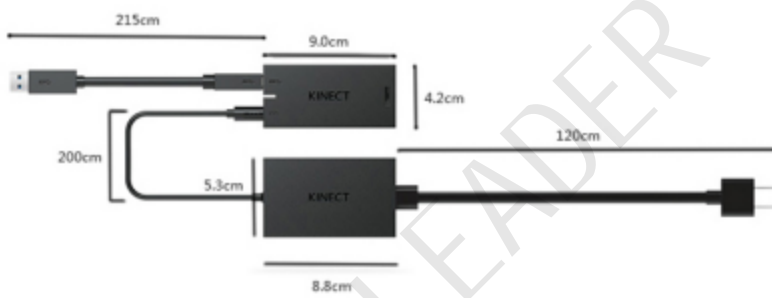


four. Body feeling installation

4.1 kinect2.0 dimension drawing

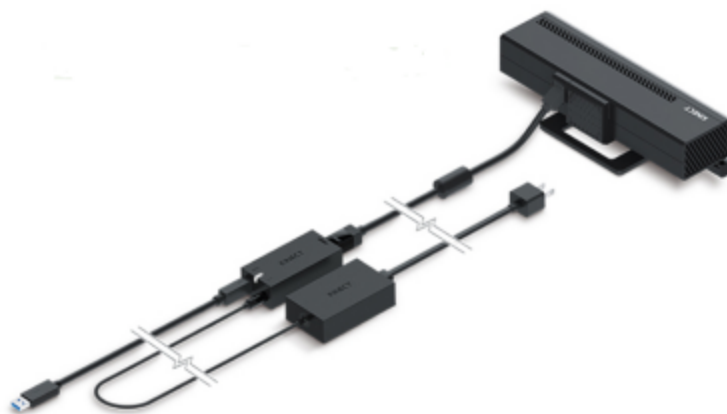


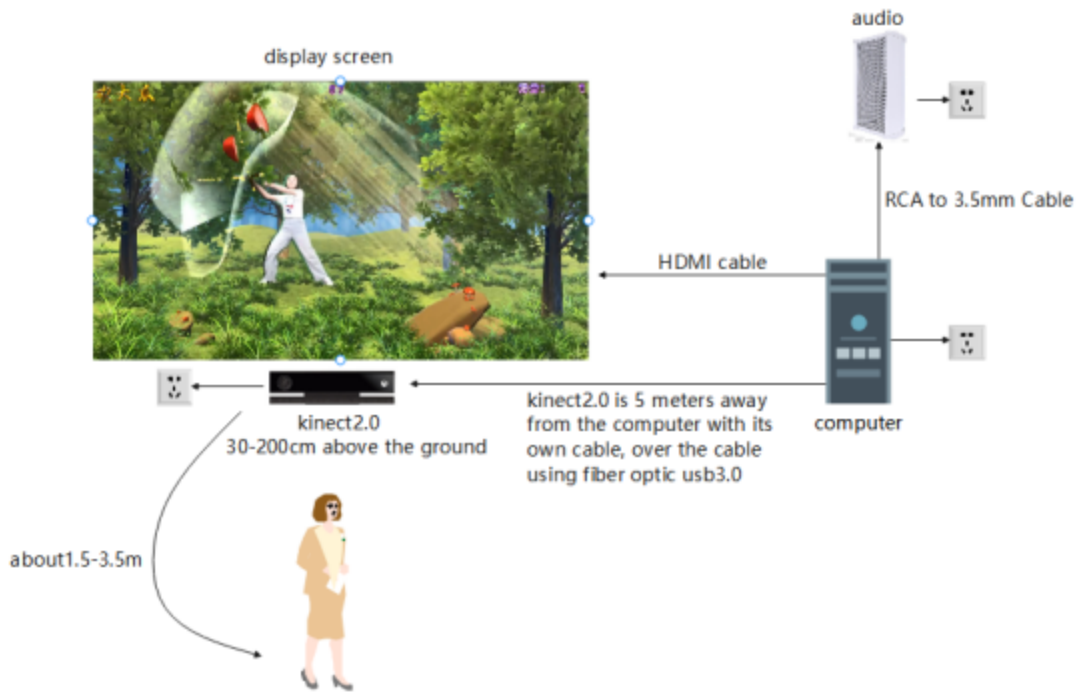
商品毛重约: 1.25kg



商品毛重约: 1.0kg

4.2 kinect2.0 connection diagram





4.3 Common fixation method

- (1) Put the cabinet on hold



(2) Plastic bracket fixed



(3) The triangulation bracket is fixed



(4) Rain rain bracket bracket (available outdoors)



(5) Embedded, integrated and fixed
Horizontal screen 1:



Cross screen 2: (using a collar body sensing horizontal screen all-in-one)



55 inch vertical horizontal screen size chart



Vertical screen: (using the all-in-one body sensing portrait machine)

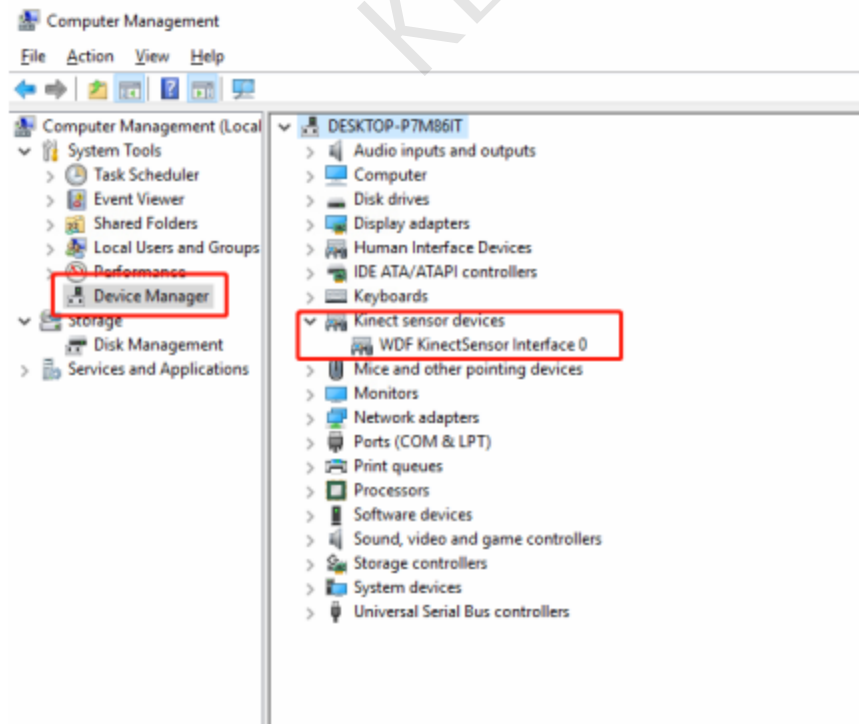
55 inch vertical screen all-in-one machine size



five. Sensory connectivity screening method

5.1 Device Manager Views kinect2.0

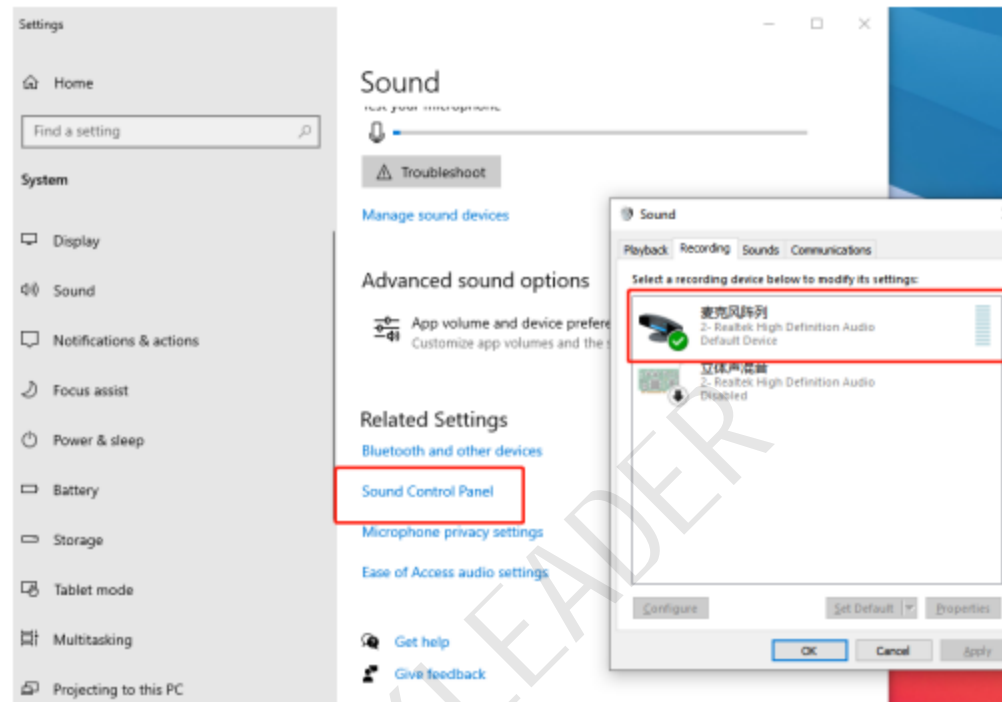
View the device Manager, a WDF kinect sensor Interface0 indicates that the line connection is normal.



(If kinect2.0 is frequently restarted, you need to check one by one. First, open the microphone matrix in 5.2; second, reinstall the system or replace the computer, and finally try to replace the kinect2.0 camera.)

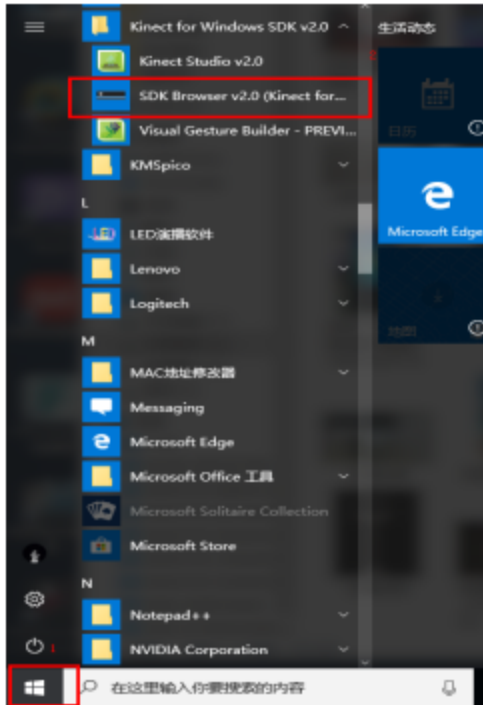
5.2 The microphone matrix drive must be in an on state

In the computer sound setting, the Xbox NUI Sensor microphone matrix, turn on

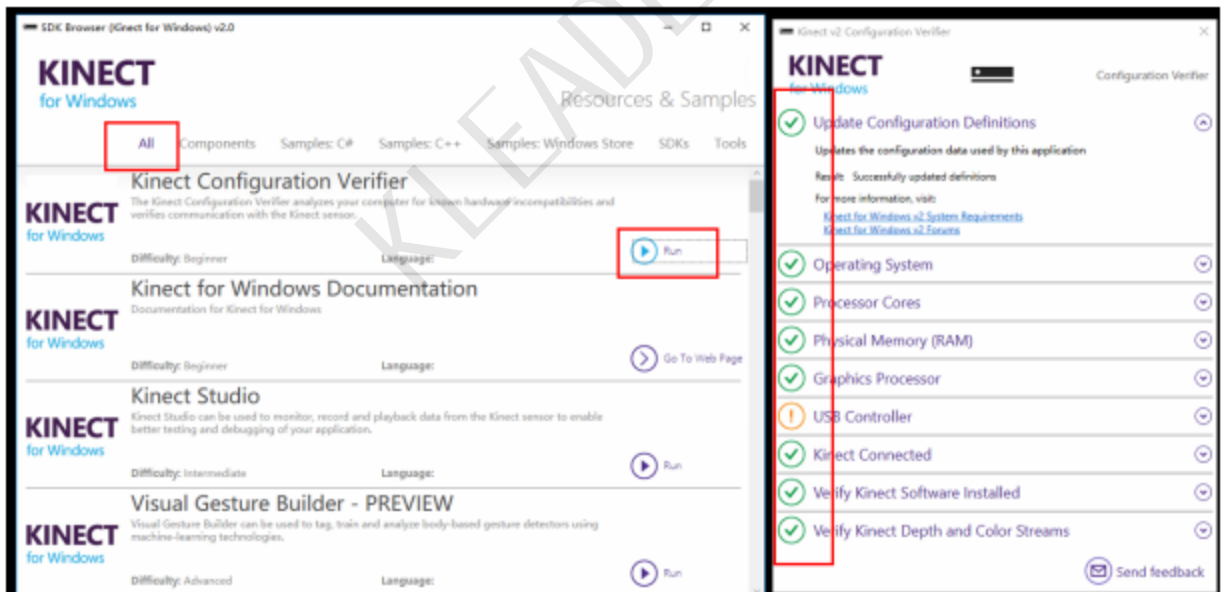


5.3 Use the somatosensory built-in SDK driver to check whether the camera is connected

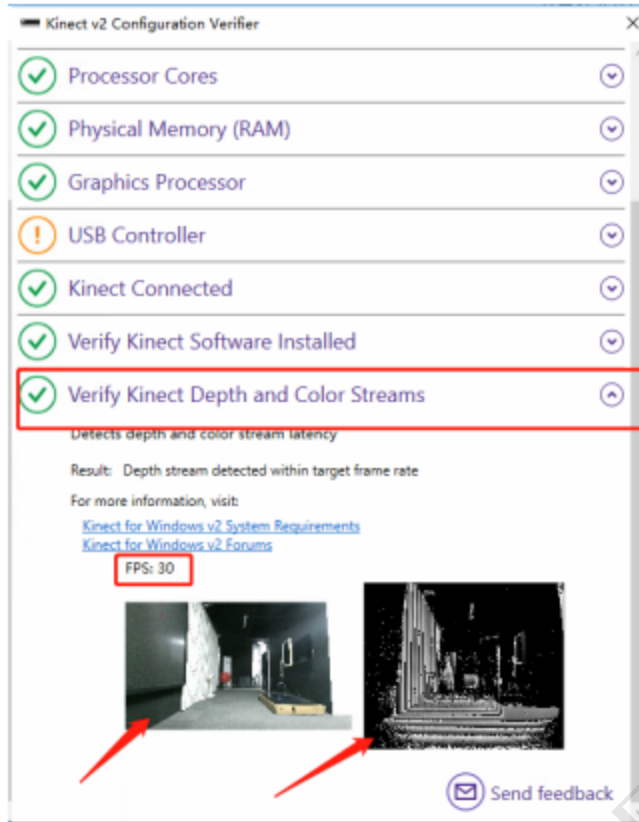
(1) Open the SDK Browser v2.0 (Kinect for Windows) in the software Kinect for Windows SDK v2.0



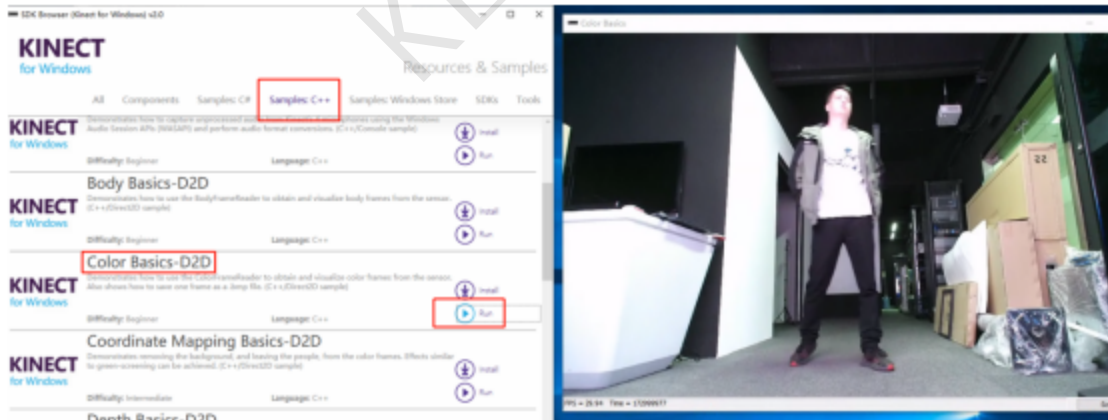
(2) Click `ALL -kinect Configuration Verifier - -run` to check whether there is an X option and check the corresponding problems.



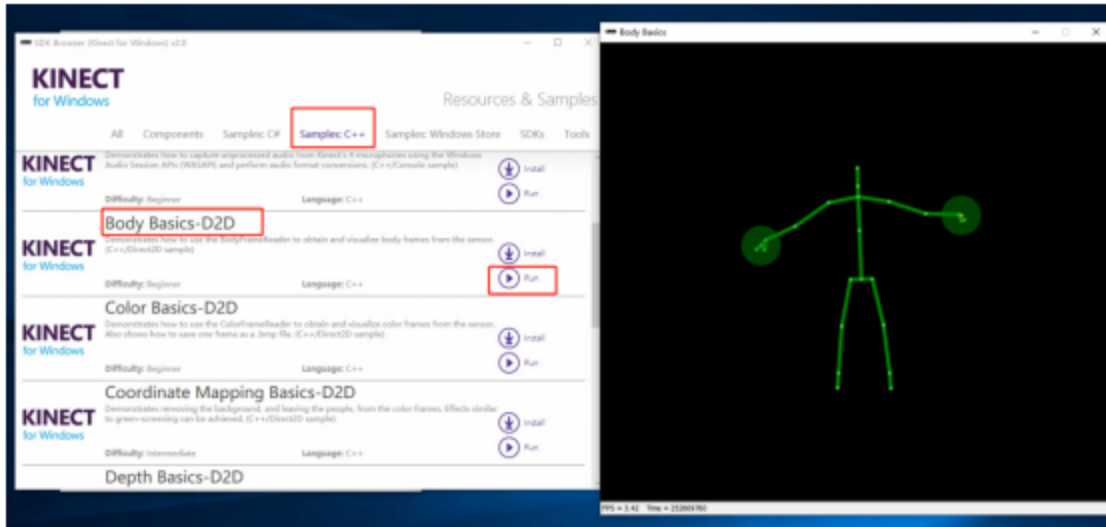
(3) And ensure that the FPS in the Verify Kinect Depth and Color Streams must be stable within 25-30FPS;



(4) Click C + + -ColorBasics-D2D to view the real picture in the form of large pictures to ensure that the camera captures the whole body of the experience person.



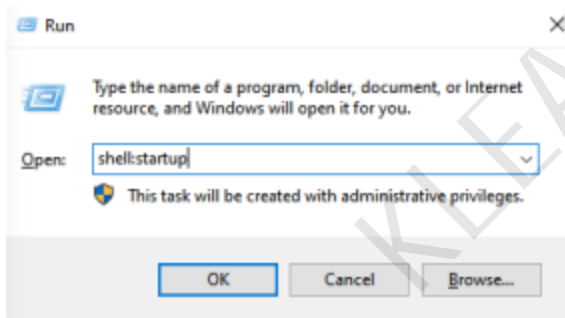
(5) Click C + + -Body Basics-D2D to check the bone point information, If your bones jump randomly, you need to take off your black reflective clothing.



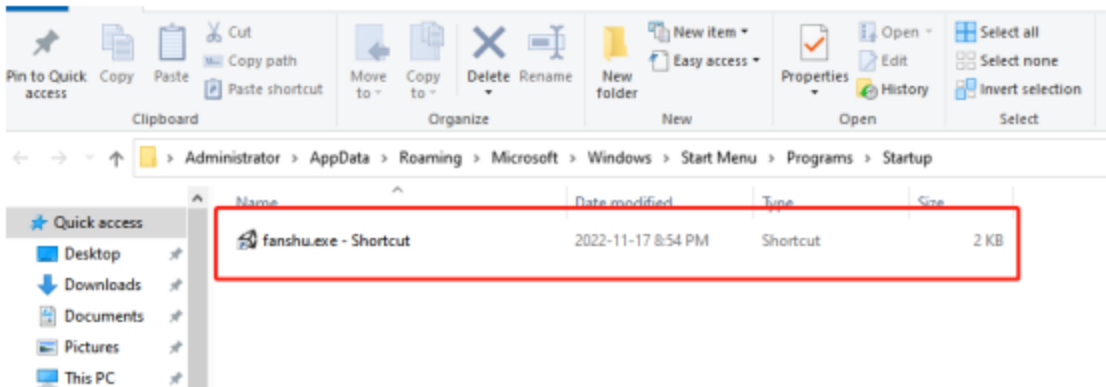
六 . How to start the game on

6.1 Single game-The startup folder that comes with the system

In the run, enter shell: startup,



Then put the shortcut of the program into the folder, you can realize the boot automatically start the program.



6.2 Multiple Games-List Players' Methods

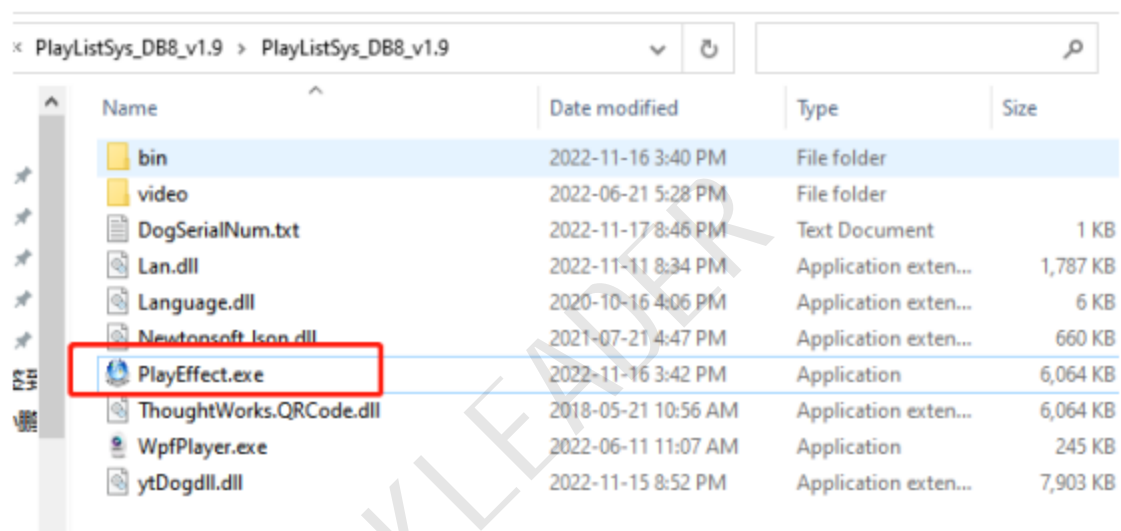
(1) Open the PlayEffect.exe

Games can be played in a loop or manually switched between the last and next game (shortcut cuts, and.) ;

The running time of each game can be customized;

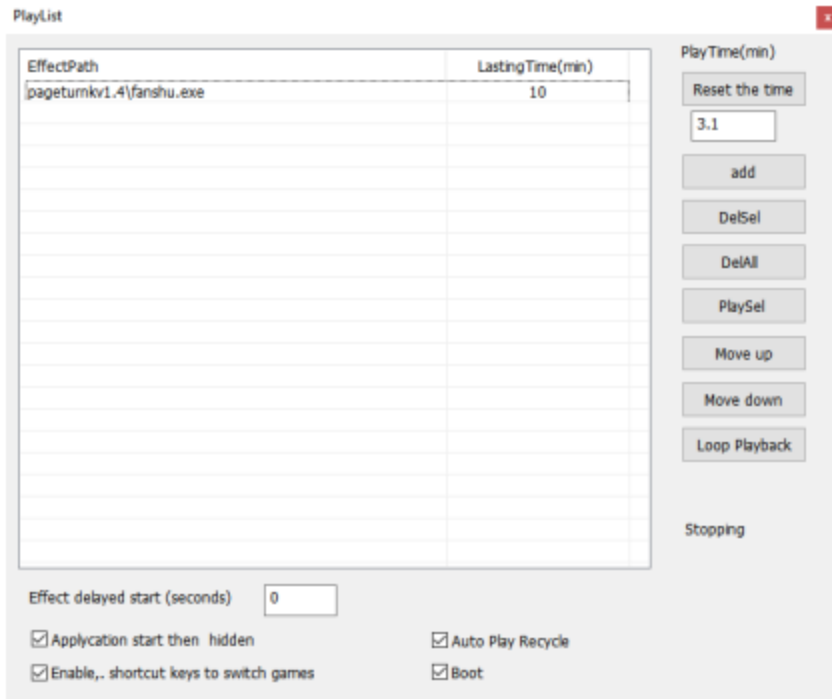
Delay delay on the start of the playback effect;

Start on since startup and after player minimized.



× PlayListSys_DB8_v1.9 > PlayListSys_DB8_v1.9

Name	Date modified	Type	Size
bin	2022-11-16 3:40 PM	File folder	
video	2022-06-21 5:28 PM	File folder	
DogSerialNum.txt	2022-11-17 8:46 PM	Text Document	1 KB
Lan.dll	2022-11-11 8:34 PM	Application exten...	1,787 KB
Language.dll	2020-10-16 4:06 PM	Application exten...	6 KB
Newtonsoft.Json.dll	2021-07-21 4:47 PM	Application exten...	660 KB
PlayEffect.exe	2022-11-16 3:42 PM	Application	6,064 KB
ThoughtWorks.QRCode.dll	2018-05-21 10:56 AM	Application exten...	6,064 KB
WpfPlayer.exe	2022-06-11 11:07 AM	Application	245 KB
ytDogdll.dll	2022-11-15 8:52 PM	Application exten...	7,903 KB

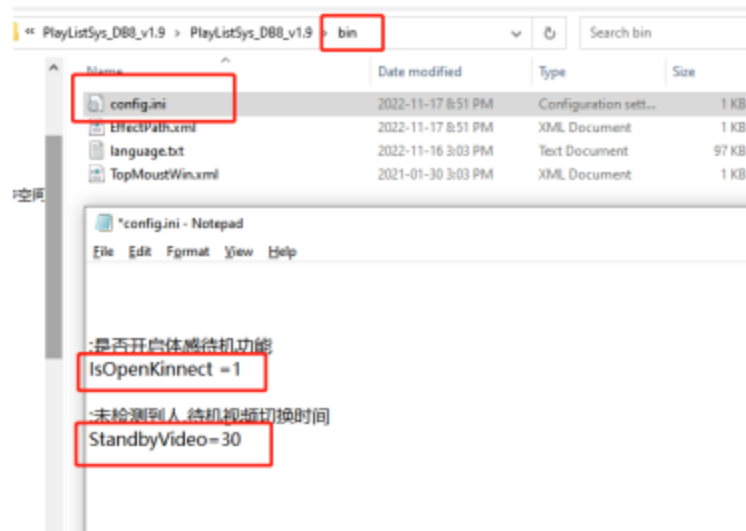


(2) No one plays the standby video

Using the list player, when the function of playing standby video, install somatosensory SDK
 Standby video is placed under the video folder, waiting. The mp4 same name is the same format replacement



Under the bin files, the config. Under ini, the standby function is turned on, and you can set how long the standby video time can be played.



七、List player central control code

List player central control code: port 9445

Send UDP string command (ascii encoding) (command written case regardless)

Playpre last effect

Play next, for the next effect

Play recurrence

Stop cease

Playindex, play the serial number effect Playindex | | 1: Play the first one, and so on

Closesoft to shutdown the software

example:

String: Playindex | | 1

Headecimal: 50 6C 61 79 69 6E 64 65 78 7C 7C 31

Playindex| |2

50 6C 61 79 69 6E 64 65 78 7C 7C 32

Playindex| |3

50 6C 61 79 69 6E 64 65 78 7C 7C 33